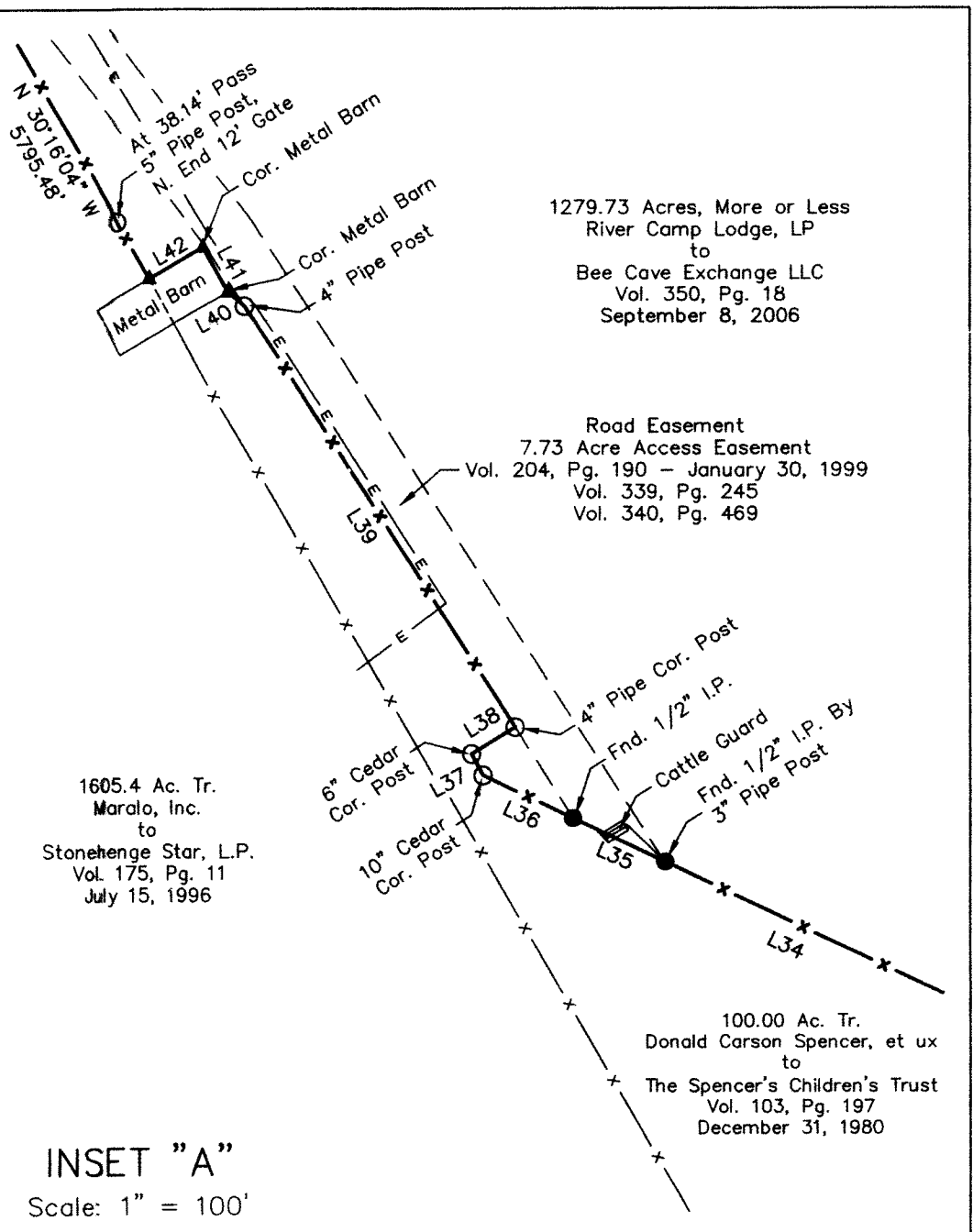
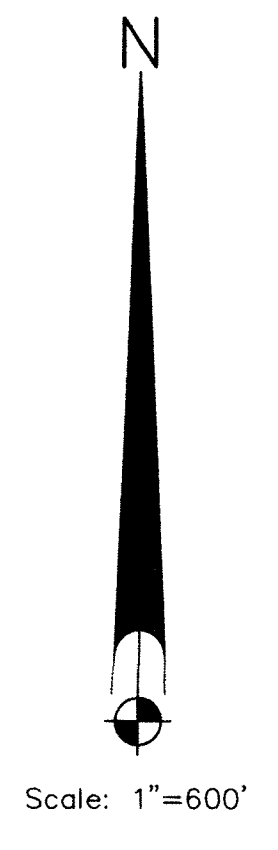
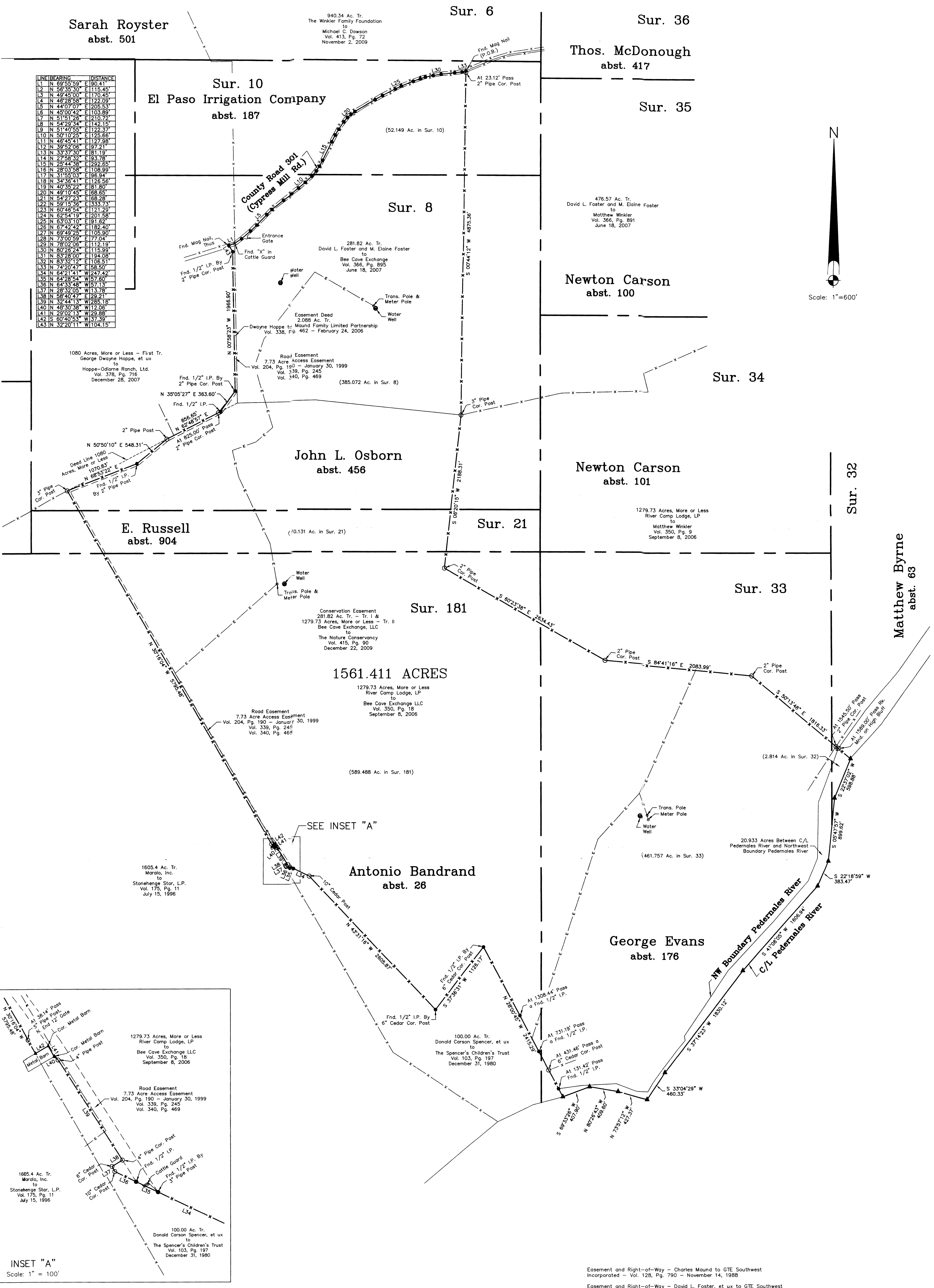


Blanco County, Texas

LINE	BEARING	DISTANCE
L1	N 69°53'56" E	130.41
L2	S 83°32'30" E	115.45
L3	N 49°42'00" E	170.45
L4	N 46°28'58" E	122.09
L5	N 44°07'07" E	205.53
L6	N 45°00'42" E	103.89
L7	N 51°51'28" E	210.72
L8	N 54°29'34" E	142.15
L9	N 51°40'55" E	122.37
L10	N 50°10'25" E	125.66
L11	N 46°45'41" E	127.98
L12	N 39°52'08" E	97.21
L13	N 33°37'30" E	81.19
L14	N 27°58'32" E	93.78
L15	N 25°44'38" E	292.65
L16	N 28°03'58" E	108.99
L17	N 31°55'03" E	96.94
L18	N 34°36'41" E	126.56
L19	N 40°35'22" E	81.60
L20	N 49°10'45" E	68.65
L21	N 54°27'23" E	68.28
L22	N 59°15'36" E	333.73
L23	N 60°45'54" E	121.29
L24	N 62°54'19" E	201.58
L25	N 63°03'10" E	91.62
L26	N 67°42'42" E	182.40
L27	N 69°40'25" E	105.90
L28	N 73°00'59" E	77.04
L29	N 78°02'06" E	112.19
L30	N 80°23'38" E	115.99
L31	N 83°28'00" E	194.05
L32	N 83°32'12" E	106.51
L33	N 74°20'47" E	58.50
L34	N 64°21'44" W	147.42
L35	N 64°28'54" W	67.60
L36	N 64°33'48" W	57.13
L37	N 63°33'05" W	13.78
L38	N 64°40'47" E	92.71
L39	N 32°44'13" W	285.18
L40	N 48°30'38" W	12.06
L41	N 23°02'13" W	29.88
L42	S 60°40'53" W	37.39
L43	N 32°20'11" W	104.15



CHARLES ROTHE & ASSOCIATES, INC.
 ENGINEERS & SURVEYORS
 1705 Ave. K, P.O. Box 426
 Hondo, TX 78861
 Ph: (830)426-3005
 Fax: (830)426-3160
 e-mail: crassoc@hondo.net
 www.rotheandsurveyor.com

A Plat of 1561.411 Acres of land situated about 18 miles N 26° E of Blanco, in Blanco County, Texas.

Easement and Right-of-Way - Charles Maund to GTE Southwest Incorporated - Vol. 128, Pg. 790 - November 14, 1988
 Easement and Right-of-Way - David L. Foster, et ux to GTE Southwest Incorporated - Vol. 149, Pg. 27 - January 27, 1994
 Easement - Maund Family Limited Partnership to GTE Southwest Incorporated - Vol. 283, Pg. 790 - July 31, 2003

Prepared For: Bee Cave Exchange LLC
 The bearings are relative to Geodetic North WGS 84 as taken from GPS Observations.
 I certify that the foregoing plat was prepared from an actual survey made under my supervision on the 14th day of August, 2018.

 Charles W. Rothe
 Registered Professional Surveyor No. 2453
 Firm No. 10122200

