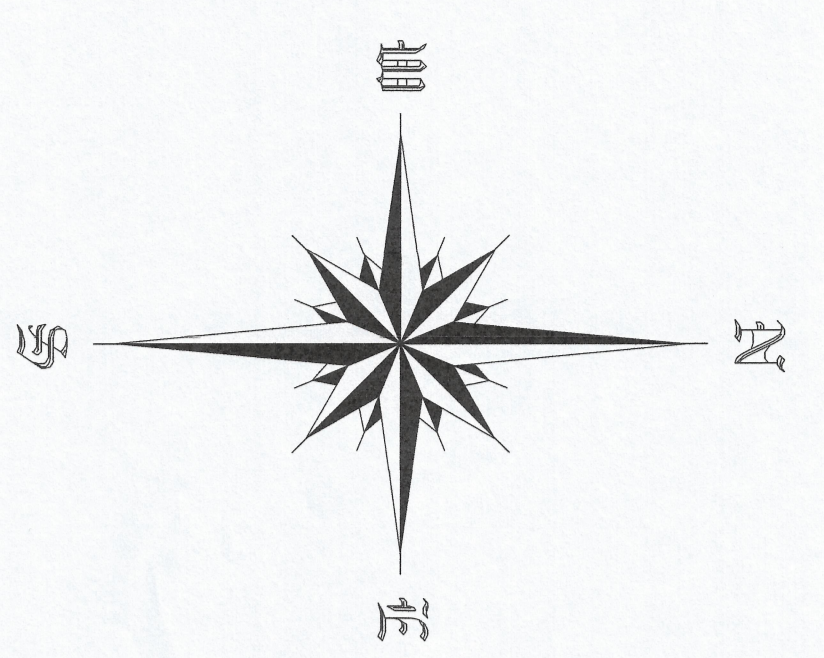
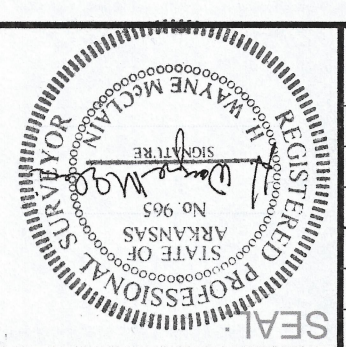


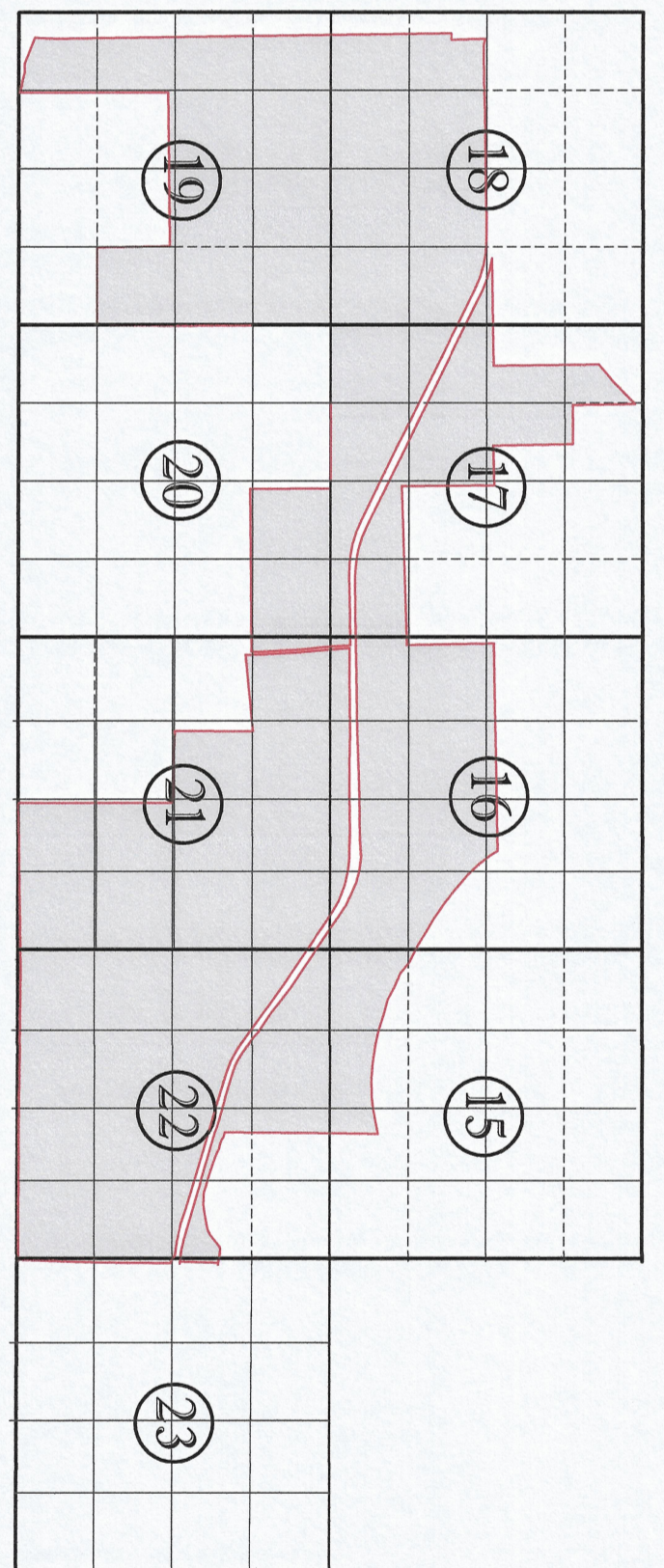
REPUBLIC RANCHES  
PROPERTY SURVEY  
PART OF SECTIONS 15-23, T14S, R28W  
MILLER COUNTY ARKANSAS

REGISTERED PROFESSIONAL LAND SURVEYORS  
OKLAHOMA & ARKANSAS  
109 Hubby, P.O. Box 17853  
MCCLAIN RIVERVIEW, OK 74853  
**McCLAIN**  
SURVEYING, P.C.

DRG# 19179  
DRAWN BY: KCS/KS/ART  
SURVEY BY: KCS/KS/NR  
FIELD NOTES: 609-17, 28, 28, 34, 71-73  
NO. REVISION: \_\_\_\_\_ DATE BY: \_\_\_\_\_  
Certificate of Authorization #2338  
Expires 6/30/2021



- LEGEND**
- Indicates iron pin found
  - Indicates stone found
  - Indicates monument found
  - △ Indicates railroad spike
  - Indicates 50d nail set



T 14 S R 28 W

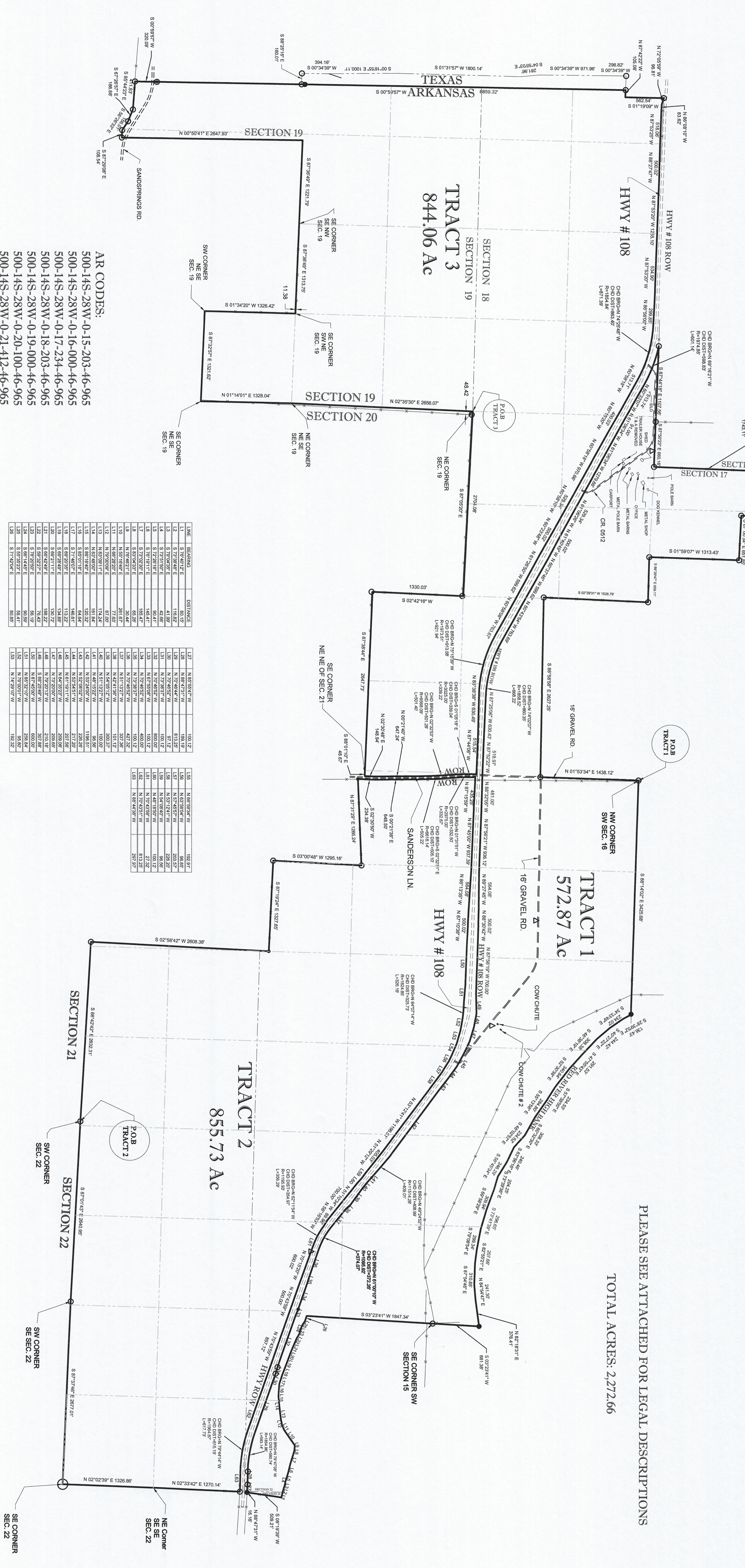
PLEASE SEE ATTACHED FOR LEGAL DESCRIPTIONS  
TOTAL ACRES: 2,272.66

**BASIS OF BEARINGS:**  
GEODETIC BEARINGS FROM GPS. WGS84 STATE PLANE COORDINATES.  
OKLAHOMA SOUTH ZONE. ALL DISTANCES ARE GROUND DISTANCES.

**CERTIFICATION:** TO REPUBLIC RANCHES

I, Wayne McClain, a Registered Professional Land Surveyor in the State of Arkansas, do hereby certify, to the named party shown herein, that this plat is a true representation of a survey performed under my supervision on the date shown and that said survey meets the requirements of the Arkansas Minimum Standards for Land Surveying.

*Wayne McClain*  
Wayne McClain Date Signed 06/04/2020  
Registered Professional Land Surveyor #965



- AR CODES:**
- 500-14S-28W-0-15-203-46-965
  - 500-14S-28W-0-16-000-46-965
  - 500-14S-28W-0-17-234-46-965
  - 500-14S-28W-0-18-203-46-965
  - 500-14S-28W-0-19-000-46-965
  - 500-14S-28W-0-20-100-46-965
  - 500-14S-28W-0-21-412-46-965
  - 500-14S-28W-0-22-000-46-965
  - 500-14S-28W-0-23-304-46-965

LINE	BEARINGS	DISTANCE
1	S 72°40'27" E	80.12
2	S 72°40'27" E	111.92
3	N 72°40'27" W	50.12
4	S 72°40'27" E	42.86
5	S 72°40'27" E	92.41
6	S 72°40'27" E	162.47
7	S 72°40'27" E	162.47
8	S 72°40'27" E	62.28
9	S 72°40'27" E	77.62
10	N 72°40'27" W	201.87
11	N 72°40'27" W	101.12
12	N 72°40'27" W	99.07
13	N 72°40'27" W	122.32
14	N 72°40'27" W	146.81
15	N 72°40'27" W	146.81
16	N 72°40'27" W	113.22
17	S 72°40'27" E	202.28
18	N 72°40'27" W	202.28
19	S 72°40'27" E	130.72
20	S 72°40'27" E	186.22
21	S 72°40'27" E	76.42
22	S 72°40'27" E	50.02
23	S 72°40'27" E	50.02
24	S 72°40'27" E	58.41
25	S 72°40'27" E	62.93

LINE	BEARINGS	DISTANCE
127	N 87°50'47" W	182.17
128	N 87°50'47" W	182.17
129	N 87°50'47" W	220.57
130	N 87°50'47" W	57.12
131	N 72°40'27" W	101.12
132	N 72°40'27" W	80.00
133	N 72°40'27" W	460.00
134	N 72°40'27" W	460.00
135	N 72°40'27" W	101.12
136	N 72°40'27" W	101.12
137	N 72°40'27" W	351.26
138	N 72°40'27" W	101.12
139	N 72°40'27" W	101.12
140	N 72°40'27" W	101.12
141	N 72°40'27" W	101.12
142	N 72°40'27" W	86.96
143	N 72°40'27" W	116.51
144	N 72°40'27" W	212.28
145	N 72°40'27" W	202.28
146	N 72°40'27" W	202.28
147	N 72°40'27" W	202.28
148	N 72°40'27" W	210.18
149	N 72°40'27" W	202.28
150	N 72°40'27" W	202.28
151	N 72°40'27" W	202.28
152	N 72°40'27" W	202.28
153	N 72°40'27" W	202.28
154	N 72°40'27" W	182.17
155	N 72°40'27" W	182.17