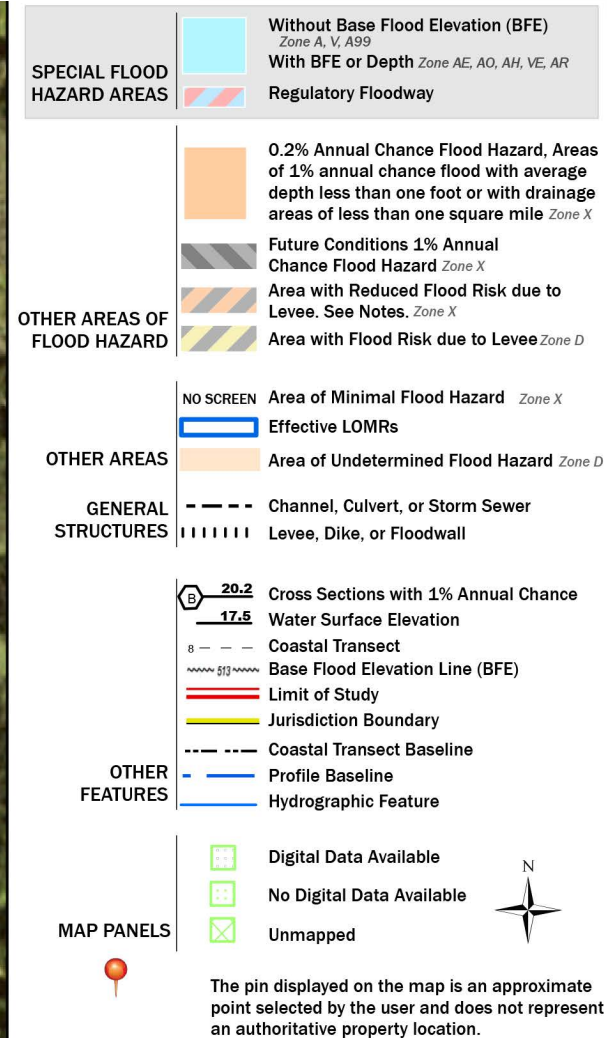


# Floodplain



This map complies with FEMA's standards for the use of digital flood maps if it is not void as described below. The basemap shown complies with FEMA's basemap accuracy standards.

The flood hazard information is derived directly from the authoritative NFHL web services provided by FEMA. This map was exported on **2/4/2022 at 4:49 PM** and does not reflect changes or amendments subsequent to this date and